

**Commission on Water Resource Management**  
**Surface-Water Hydrologic Units**

**A Management Tool for Instream Flow Standards**

PR-2005-01



**Prepared by the**

**Commission on Water Resource Management**  
**Department of Land and Natural Resources**  
**State of Hawaii**

**June 2005**



**TABLE OF CONTENTS**

LIST OF ACRONYMS..... *i*

PREFACE .....*iii*

1.0 SURFACE-WATER HYDROLOGIC UNIT CODING SYSTEM ..... 1  
    HYDROLOGIC UNIT CODE ..... 2  
    ISLAND CODE ..... 3  
    SYSTEM CODE ..... 3

2.0 WATERSHED/STREAM CODING SYSTEM REFERENCE ..... 4

3.0 SURFACE-WATER HYDROLOGIC UNIT MAPS ..... 4

APPENDIX A       Hydrologic Unit Codes: Sorted By Hydrologic Unit Code

APPENDIX B       Hydrologic Unit Codes: Sorted By Hydrologic Unit Name

APPENDIX C       Watershed/Stream Coding System Reference

APPENDIX D       Surface-Water Hydrologic Unit Maps

**LIST OF ACRONYMS**

CWRM	Commission on Water Resource Management
CZM	Coastal Zone Management Program, State Office of Planning
DRG	Digital Raster Graphic
GIS	Geographic Information System
HRS	Hawaii Revised Statutes
HSA	Hawaii Stream Assessment
NRCS	U.S. Natural Resources Conservation Service
USGS	U.S. Geological Survey
WRPP	Water Resource Protection Plan



## PREFACE

As part of the update of the Water Resource Protection Plan (WRPP), the Commission on Water Resource Management (CWRM) identified the need for a standardized coding system to delineate and codify Hawaii's surface-water resources. The coding system is an important first-step towards improving the organization and management of surface-water information that CWRM collects and maintains. Key objectives of the CWRM Surface-Water Hydrologic Units include the following:

- 1) Define and delineate unique units that can accommodate the relational requirements in a database environment, while providing a system that can be easily understood by the general public.
- 2) Develop an information management system which utilizes a coding system to relate surface-water permits and other resource information to a given unit.
- 3) Define hydrologic units to be considered in the analysis and development of instream flow standards.
- 4) Provide a reference system that promotes better information management of other resource inventories.
- 5) Promote the sharing and collection of surface-water resource data between government agencies, the public, private entities, and community organizations.
- 6) Improve the overall coordination of monitoring, data collection, and field investigation efforts.

The CWRM Surface-Water Hydrologic Units provides a practical approach to managing surface-water information maintained by the CWRM, thereby allowing additional efforts to easily build upon or refer to this system. Through this effort, Commission staff will be able to better coordinate and improve surface water data collection and utilization between agencies and stakeholders, leading to better statewide resource management measures.



## 1.0 SURFACE-WATER HYDROLOGIC UNIT CODING SYSTEM

The State Water Code (Code), Chapter 174C, Hawaii Revised Statutes (HRS), mandates that the Water Resource Protection Plan shall include, but not be limited to:

“Hydrologic units and their characteristics, including the quantity and quality of available resource, requirements for beneficial instream uses and environmental protection, desirable uses worthy of preservation by permit, and undesirable uses for which permits may be denied.”

The Code defines a hydrologic unit as follows:

“A surface drainage area or a ground water basin or a combination of the two.”

Ground-water hydrologic units were established by the CWRM under the 1990 WRPP, however the Plan only suggested a complex surface-water classification scheme. The Plan established Aquifer Sectors and Systems, with a code and name assigned to each. Under this coding system, each Aquifer System was described and an estimated sustainable was calculated.

As part of the update of the WRPP, the CWRM sought to establish a coding system that would serve as the first step towards establishing instream flow standards, similar to the system developed for ground-water hydrologic units, or aquifers. However, staff recognized that surface-water hydrologic units may not represent strict drainage basin delineations, primarily based on the means by which instream flow standards are prescribed under the Code. Chapter 174C-71, HRS, states:

“In formulating the proposed standards, the commission shall weigh the importance of the present or potential uses of water from the stream for noninstream purposes, including the economic impact of restriction of such uses.”

While instream uses may generally fall within a true surface drainage area, noninstream uses tend to be land-based and therefore may not always fall within the same drainage area.

In developing the CWRM Surface-Water Hydrologic Units, it was necessary to review the *Hawaii Stream Assessment* (1990), *State Definition and Delineation of Watersheds* (1994), and *Refinement of Hawaii Watershed Delineations* (1999) reports to arrive at a coding system that could meet the requirements for organizing and managing surface-water information in a database environment. An equally important objective was to provide a coding system that could be easily administered and understood by the general public and other agencies.

Through the review of the reports identified above, the strengths and weaknesses of each were identified and are outlined in Table 1.1 below. It is important to note that each of the reports conducted extensive research into the development of their respective systems, however, each coding system was created with a specific purpose or a specific agency in mind (Refer to these reports for more detailed analysis and discussion). The primary objective of the CWRM Surface-Water Hydrologic Units is to establish a system that is appropriate for the informational requirements of CWRM.

Table 1.1. Summary of strengths and weaknesses of the various watershed/stream coding systems reviewed by the CWRM.

<b>Hawaii Stream Assessment</b>	
<b>Strengths</b>	<b>Weaknesses</b>
<ul style="list-style-type: none"> <li>• The first attempt to code streams and attribute stream-related information in a database structure.</li> <li>• Includes all perennial streams statewide.</li> <li>• Uses a 1-digit island code (e.g., '3' for Oahu).</li> </ul>	<ul style="list-style-type: none"> <li>• Does not include intermittent streams.</li> <li>• Includes a hydrographic unit code that is unnecessary.</li> <li>• Codes are assigned to a stream, as opposed to the entire watershed (where much of the data was derived from watershed attributes).</li> <li>• Includes dashes (-) in the code (e.g., 3-2-04 for Waiahole Stream) that may be problematic in a database structure.</li> </ul>
<b>State Definition and Delineation of Watersheds</b>	
<b>Strengths</b>	<b>Weaknesses</b>
<ul style="list-style-type: none"> <li>• The first attempt to delineate watershed areas statewide (especially important, as watershed conditions contribute to the overall stream condition).</li> <li>• Delineates all watersheds statewide, including those containing intermittent streams.</li> <li>• Applies new codes to watersheds containing intermittent streams.</li> <li>• Maintains the stream mouth code from the <i>Hawaii Stream Assessment</i>.</li> </ul>	<ul style="list-style-type: none"> <li>• Uses an 8-digit island code based on USGS Hydrologic Units (e.g., '20060000' for Oahu).</li> <li>• Maintains the hydrographic unit code from the <i>Hawaii Stream Assessment</i>.</li> <li>• Coding of intermittent streams applies a 2-digit hydrologic unit code starting from 99 and working backwards.</li> <li>• Includes dashes (-) in the code (e.g., 3-2-04) that may be problematic in a database structure.</li> </ul>
<b>Refinement of Hawaii Watershed Delineations</b>	
<b>Strengths</b>	<b>Weaknesses</b>
<ul style="list-style-type: none"> <li>• Revised watershed delineations based upon revised 1:24,000 USGS DRG quadrangle maps.</li> <li>• Removed the dashes (-) in the code (e.g., 20060000204000 for Waiahole watershed)</li> </ul>	<ul style="list-style-type: none"> <li>• Continued the coding format for islands and intermittent streams used in the <i>State Definition and Delineation of Watersheds</i>.</li> </ul>

## HYDROLOGIC UNIT CODE: 0000

The hydrologic unit code is a unique combination of four digits. Rather than replicate or build from previous coding efforts, the Commission opted to reassign new sequential codes that could be efficiently implemented in a database environment and be easily understood. Borrowing from the *State Definition and Delineation of Watersheds* report, a watershed unit is defined as follows:

“A watershed unit is comprised of a drainage basin (or basins) which include both stream and overland flow, whose runoff either enters the ocean along an identified segment of coastline (coastal segment) or enters an internal, landlocked drainage basin. The watershed units for an island are defined so that all segments of coastline are assigned to a unique watershed unit and so that all areas of an island are assigned to one, and only one, watershed unit.”

Hydrologic units with perennial streams are of primary importance, however, it is also essential to consider those units with intermittent or ephemeral streams as well as those with no clearly



defined watercourses. Outlined below are the individual components of the hydrologic unit coding system.

**ISLAND CODE: 0000**

The first digit represents the eight main Hawaiian Islands using an unique number assigned by the CWRM. The Island Code is the same 1-digit number used in the HSA. The islands of Niihau, Kahoolawe and Lanai did not appear in the HSA database because these islands do not have perennial streams, however they have been included in this report as part of a more comprehensive surface water management scheme.

Island Code	Island Name
1	Niihau
2	Kauai
3	Oahu
4	Molokai
5	Lanai
6	Maui
7	Kahoolawe
8	Hawaii

**SYSTEM CODE: 0000**

The last three digits are sequentially assigned, generally beginning in the northern portion of each island and continuing in a clockwise manner. This method is similar to previous coding efforts.

The CWRM Surface-Water Hydrologic Unit coding system does not include hydrologic sector units. Previous coding system efforts included a hydrologic sector code that represented regional drainage areas for each island. For example, Oahu was subdivided into Koolauloa, Koolaupoko, Honolulu, Ewa, Waianae, and Waialua. These sector designations can be incorporated at a later time if necessary and managed within the CWRM's surface-water database environment.

## 2.0 WATERSHED/STREAM CODING SYSTEM REFERENCE

The prior reports and coding systems served as a foundation for the CWRM Surface-Water Hydrologic Units. Using the results of these multiple watershed and stream coding systems, the CWRM has initiated a relational database of coding systems to facilitate the sharing of information between government agencies. The current compilation of coding systems is provided in Appendix C: Watershed/Stream Coding System Reference. However, it should be emphasized that this database is expected to change, as information sources are refined and other sources added. Therefore, the most current version of this database should be accessed through CWRM when needed. The following table outlines each coding system and their respective reports.

<b>Coding System</b>	<b>Report Title</b>
HSA Coding System	<i>Hawaii Stream Assessment (1990)</i>
CZM Coding System	<i>State Definition and Delineation of Watersheds (1994)</i>
NRCS Coding System	<i>Refinement of Hawaii Watershed Delineations (1999)</i>

## 3.0 SURFACE-WATER HYDROLOGIC UNIT MAPS

The *Refinement of Hawaii Watershed Delineations* report, and accompanying GIS layer, were obtained from Ms. Patricia Shade of NRCS, which provided the bulk of information used in developing the GIS layer and hydrologic unit maps for the CWRM Surface-Water Hydrologic Units. Delineated drainage basin layers for all islands, obtained from Dr. James Parham and developed using the RiverTools software, were also included in this analysis and refinement. These drainage basin layers were derived from 10-meter USGS digital elevation models.

For the majority of hydrologic units, unit boundaries closely matched the drainage basins. In these cases, individual stream systems were contained entirely within the hydrologic unit boundaries (from the headwater to the mouth). However, in a few instances, streams were found to go across hydrologic unit boundaries and in these cases drainage basins further were examined to more accurately determine the natural flow of water based on elevation gradients. In these instances, the hydrologic unit boundaries were evaluated together with the drainage basin layer and redrawn through on-screen digitizing using ArcGIS software.

The GIS layer representing the CWRM Surface-Water Hydrologic Units is available from the CWRM and maps of all hydrologic units statewide are provided in Appendix D. This hydrologic unit layer will be integrated as part of the ongoing analysis and eventual establishment of instream flow standards. The hydrologic unit database and GIS layer will be continually revised as new and improved information becomes available, or further analysis is conducted.

## **APPENDIX A**

### **Surface-Water Hydrologic Unit Codes** *Sorted by Hydrologic Unit Code*

---

## Island of Maui: Sorted by Hydrologic Unit Code

<b>Hydrologic Unit Code</b>	<b>Hydrologic Unit Name</b>
6001	Waikapu
6002	Pohakea
6003	Papalaua
6004	Ukumehame
6005	Olowalu
6006	Launiupoko
6007	Kauaula
6008	Kahoma
6009	Wahikuli
6010	Honokowai
6011	Kahana
6012	Honokahua
6013	Honolua
6014	Honokohau
6015	Anakaluahine
6016	Poelua
6017	Honanana
6018	Kahakuloa
6019	Waipili
6020	Waiolai
6021	Makamakaole
6022	Waihee
6023	Waiehu
6024	Iao
6025	Kaliialinui
6026	Kailua Gulch
6027	Maliko
6028	Kuiaha
6029	Kaupakulua
6030	Manawaiiao
6031	Uaoa
6032	Kealii
6033	Kakipi
6034	Honopou
6035	Hoolawa
6036	Waipio
6037	Hanehoi
6038	Hoalua

<b>Hydrologic Unit Code</b>	<b>Hydrologic Unit Name</b>
6039	Hanawana
6040	Kailua
6041	Nailiihaele
6042	Puehu
6043	Oopuola
6044	Kaaiea
6045	Punaluu
6046	Kolea
6047	Waikamoi
6048	Puohokamoa
6049	Haipuaena
6050	Punalau
6051	Honomanu
6052	Nuaailua
6053	Piinaau
6054	Ohia
6055	Waiokamilo
6056	Wailuanui
6057	West Wailuaiki
6058	East Wailuaiki
6059	Kopiliula
6060	Waiohue
6061	Paakea
6062	Waiaaka
6063	Kapaula
6064	Hanawi
6065	Makapipi
6066	Kuhiwa
6067	Waihole
6068	Manawaikeae
6069	Kahawaihapapa
6070	Keaaiki
6071	Waioni
6072	Kanikele
6073	Heleleikeoha
6074	Kawakoe
6075	Honomaele
6076	Kawaipapa
6077	Moomoonui

<b>Hydrologic Unit Code</b>	<b>Hydrologic Unit Name</b>
6078	Haneoo
6079	Kapia
6080	Waiohonu
6081	Papahawahawa
6082	Alaalaula
6083	Wailua
6084	Honolewa
6085	Waieli
6086	Kakiweka
6087	Hahalawe
6088	Puaaluu
6089	Oheo
6090	Kalena
6091	Koukouai
6092	Opelu
6093	Kukuiula
6094	Kaapahu
6095	Lelekea
6096	Alelele
6097	Kalepa
6098	Nuanuaaloo
6099	Manawainui
6100	Kaupo
6101	Nuu
6102	Pahihi
6103	Waiopai
6104	Poopoo
6105	Manawainui
6106	Kipapa
6107	Kanaio
6108	Ahihi Kinau
6109	Mooloa
6110	Wailea
6111	Hapapa
6112	Waiakoa

## **APPENDIX B**

### **Surface-Water Hydrologic Unit Codes** *Sorted by Hydrologic Unit Name*

---

## Island of Maui: Sorted by Hydrologic Unit Name

<b>Hydrologic Unit Name</b>	<b>Hydrologic Unit Code</b>
Ahihi Kinau	6108
Alaalaula	6082
Alelele	6096
Anakaluahine	6015
East Wailuaiki	6058
Hahalawe	6087
Haipuaena	6049
Hanawana	6039
Hanawi	6064
Hanehoi	6037
Haneoo	6078
Hapapa	6111
Heleleikeoha	6073
Hoalua	6038
Honanana	6017
Honokahua	6012
Honokohau	6014
Honokowai	6010
Honolewa	6084
Honolua	6013
Honomaele	6075
Honomanu	6051
Honopou	6034
Hoolawa	6035
Iao	6024
Kaaiea	6044
Kaapahu	6094
Kahakuloa	6018
Kahana	6011
Kahawaihapapa	6069
Kahoma	6008
Kailua	6040
Kailua Gulch	6026
Kakipi	6033
Kakiweka	6086
Kalena	6090
Kalepa	6097
Kalialinui	6025



<b>Hydrologic Unit Name</b>	<b>Hydrologic Unit Code</b>
Kanaio	6107
Kanikele	6072
Kapaula	6063
Kapia	6079
Kauaula	6007
Kaupakulua	6029
Kaupo	6100
Kawaipapa	6076
Kawakoe	6074
Keaaiki	6070
Kealii	6032
Kipapa	6106
Kolea	6046
Kopiliula	6059
Koukouai	6091
Kuhiwa	6066
Kuiaha	6028
Kukuiula	6093
Launiupoko	6006
Lelekea	6095
Makamakaole	6021
Makapipi	6065
Maliko	6027
Manawaiiao	6030
Manawaikeae	6068
Manawainui	6105
Manawainui	6099
Mooloa	6109
Moomoonui	6077
Nailiilihaele	6041
Nuaailua	6052
Nuanuaaloo	6098
Nuu	6101
Oheo	6089
Ohia	6054
Olowalu	6005
Oopuola	6043
Opelu	6092
Paakea	6061

<b>Hydrologic Unit Name</b>	<b>Hydrologic Unit Code</b>
Pahihi	6102
Papahawahawa	6081
Papalaua	6003
Piinaau	6053
Poelua	6016
Pohakea	6002
Poopoo	6104
Puaaluu	6088
Puehu	6042
Punalau	6050
Punaluu	6045
Puohokamoa	6048
Uaoa	6031
Ukumehame	6004
Wahikuli	6009
Waiaaka	6062
Waiakoa	6112
Waiehu	6023
Waieli	6085
Waihee	6022
Waihole	6067
Waikamoi	6047
Waikapu	6001
Wailea	6110
Wailua	6083
Wailuanui	6056
Waiohonu	6080
Waiohue	6060
Waiokamilo	6055
Waiolai	6020
Waioni	6071
Waiopei	6103
Waipili	6019
Waipio	6036
West Wailuaiki	6057

## **APPENDIX C**

### **Watershed/Stream Coding System Reference**



## Watershed/Stream Coding Systems Reference

Hydrologic Unit Code	Hydrologic Unit Name	NRCS Code	CZM Code	HSA Code
1001	Kaaukuu	20080000199000	20080000:1-99	
1002	Koeeaukani	20080000198000	20080000:1-98	
1003	Kaailana	20080000197000	20080000:1-97	
1004	Nomilu	20080000196000	20080000:1-96	
1005	Kalaoa	20080000195000	20080000:1-95	
1006	Honuaula	20080000194000	20080000:1-94	
1007	Halalii	20080000193000	20080000:1-93	
1008	Mauuloa	20080000192000	20080000:1-92	
1009	Nonopapa	20080000191000	20080000:1-91	
1010	Puuwai	20080000190000	20080000:1-90	
1011	Kaumuhonu	20080000189000	20080000:1-89	
1012	Keanauhi	20080000188000	20080000:1-88	
1013	Keawanui	20080000187000	20080000:1-87	
2001	Awaawapuhi	20070000101000	20070000:1-01	2-1-01
2002	Honopu	20070000102000	20070000:1-02	2-1-02
2003	Nakeikionaiwi	20070000103000	20070000:1-03	2-1-03
2004	Kalalau	20070000104000	20070000:1-04	2-1-04
2005	Pohakuao	20070000105000	20070000:1-05	2-1-05
2006	Waiolaa	20070000106000	20070000:1-06	2-1-06
2007	Hanakoa	20070000107000	20070000:1-07	2-1-07
2008	Waiahuakua	20070000108000	20070000:1-08	2-1-08
2009	Hoolulu	20070000109000	20070000:1-09	2-1-09
2010	Hanakapiai	20070000110000	20070000:1-10	2-1-10
2011	Maunapulo	20070000111000	20070000:1-11	2-1-11
2012	Limahuli	20070000112000	20070000:1-12	2-1-12
2013	Manoa	20070000113000	20070000:1-13	2-1-13
2014	Wainiha	20070000114000	20070000:1-14	2-1-14
2015	Lumahai	20070000115000	20070000:1-15	2-1-15
2016	Waikoko	20070000116000	20070000:1-16	2-1-16
2017	Waipa	20070000117000	20070000:1-17	2-1-17
2018	Waioli	20070000118000	20070000:1-18	2-1-18
2019	Hanalei	20070000119000	20070000:1-19	2-1-19
2020	Waileia	20070000120000	20070000:1-20	2-1-20
2021	Anini	20070000121000	20070000:1-21	2-1-21
2022	Kalihikai West	20070000122000	20070000:1-22	
2023	Kalihikai Center	20070000123000	20070000:1-23	
2024	Kalihikai East	20070000124000	20070000:1-24	
2025	Kalihiwai	20070000125000	20070000:1-25	2-1-25

<b>Hydrologic Unit Code</b>	<b>Hydrologic Unit Name</b>	<b>NRCS Code</b>	<b>CZM Code</b>	<b>HSA Code</b>
2026	Puukumu	20070000126000	20070000:1-26	2-1-26
2027	Kauapea	20070000127000	20070000:1-27	2-1-27
2028	Kilauea	20070000128000	20070000:1-28	2-1-28
2029	Kulihaili	20070000129000	20070000:1-29	2-1-29
2030	Pilaa	20070000131000	20070000:1-31	2-1-31
2031	Waipake	20070000133000	20070000:1-33	2-1-33
2032	Moloaa	20070000134000	20070000:1-34	2-1-34
2033	Papaa	20070000135000	20070000:1-35	2-1-35
2034	Aliomanu	20070000136000	20070000:1-36	2-1-36
2035	Anahola	20070000201000	20070000:2-01	2-2-01
2036	Kumukumu	20070000202000	20070000:2-02	2-2-02
2037	Kapaa	20070000204000	20070000:2-04	2-2-04
2038	Moikeha	20070000205000	20070000:2-05	2-2-05
2039	Waikaea	20070000206000	20070000:2-06	2-2-06
2040	Wailua	20070000208000	20070000:2-08	2-2-08s
2041	Kawailoa	20070000210000	20070000:2-10	2-2-10
2042	Hanamaulu	20070000212000	20070000:2-12	2-2-12
2043	Lihue Airport	20070000299000	20070000:2-99	
2044	Nawiliwili	20070000213000	20070000:2-13	2-2-13
2045	Puali	20070000214000	20070000:2-14	2-2-14
2046	Huleia	20070000215000	20070000:2-15	2-2-15
2047	Kipu Kai	20070000301000	20070000:3-01	2-3-01
2048	Mahaulepu	20070000399000	20070000:3-99	
2049	Waikomo	20070000302000	20070000:3-02	2-3-02
2050	Aepo	20070000303000	20070000:3-03	
2051	Lawai	20070000304000	20070000:3-04	2-3-04
2052	Kalaheo	20070000305000	20070000:3-05	
2053	Wahiawa	20070000306000	20070000:3-06	2-3-06
2054	Hanapepe	20070000307000	20070000:3-07	2-3-07
2055	Kukamahu	20070000499000	20070000:4-99	
2056	Kaumakani	20070000498000	20070000:4-98	
2057	Mahinauli	20070000401000	20070000:4-01	2-4-01
2058	Aakukui	20070000402000	20070000:4-02	2-4-02
2059	Waipao	20070000403000	20070000:4-03	2-4-03
2060	Waimea	20070000404000	20070000:4-04	2-4-04s
2061	Kapilimao	20070000501000	20070000:5-01	2-5-01
2062	Paua	20070000502000	20070000:5-02	2-5-02
2063	Hoea	20070000504000	20070000:5-04	2-5-04
2064	Niu	20070000505000	20070000:5-05	

<b>Hydrologic Unit Code</b>	<b>Hydrologic Unit Name</b>	<b>NRCS Code</b>	<b>CZM Code</b>	<b>HSA Code</b>
2065	Kaawaloa	20070000507000	20070000:5-07	2-5-07
2066	Nahomalu	20070000508000	20070000:5-08	2-5-08
2067	Kaulaula	20070000509000	20070000:5-09	2-5-09
2068	Haeleele	20070000510000	20070000:5-10	2-5-10
2069	Hikimoe	20070000511000	20070000:5-11	
2070	Kaaweiki	20070000512000	20070000:5-12	
2071	Kauhao	20070000513000	20070000:5-13	2-5-13
2072	Makaha	20070000514000	20070000:5-14	
2073	Milolii	20070000515000	20070000:5-15	2-5-15
2074	Nualolo	20070000516000	20070000:5-16	2-5-16
3001	Kalunawaikaala	20060000101000	20060000:1-01	
3002	Pakulena	20060000102000	20060000:1-02	
3003	Paumalu	20060000103000	20060000:1-03	3-1-03
3004	Kawela	20060000104000	20060000:1-04	3-1-04
3005	Oio	20060000105000	20060000:1-05	3-1-05
3006	Malaekahana	20060000106000	20060000:1-06	3-1-06
3007	Kahawainui	20060000107000	20060000:1-07	3-1-07
3008	Wailele	20060000108000	20060000:1-08	3-1-08
3009	Koloa	20060000109000	20060000:1-09	3-1-09
3010	Kaipapau	20060000110000	20060000:1-10	3-1-10
3011	Maakua	20060000111000	20060000:1-11	3-1-11
3012	Waipuhi	20060000112000	20060000:1-12	
3013	Kaluanui	20060000113000	20060000:1-13	3-1-13
3014	Papaakoko	20060000114000	20060000:1-14	
3015	Halehaa	20060000115000	20060000:1-15	
3016	Punaluu	20060000116000	20060000:1-16	3-1-16
3017	Kahana	20060000118000	20060000:1-18	3-1-18
3018	Makaua	20060000120000	20060000:1-20	3-1-20
3019	Kaaawa	20060000119000	20060000:1-19	3-1-19
3020	Kualoa	20060000299000	20060000:2-99	
3021	Hakipuu	20060000201000	20060000:2-01	3-2-01
3022	Waikane	20060000202000	20060000:2-02	3-2-02
3023	Waianu	20060000203000	20060000:2-03	3-2-03
3024	Waiahole	20060000204000	20060000:2-04	3-2-04
3025	Kaalaea	20060000205000	20060000:2-05	3-2-05
3026	Haiamoa	20060000206000	20060000:2-06	
3027	Kahaluu	20060000207000	20060000:2-07	3-2-07s
3028	Heeia	20060000208000	20060000:2-08	3-2-08
3029	Keaahala	20060000209000	20060000:2-09	3-2-09

<b>Hydrologic Unit Code</b>	<b>Hydrologic Unit Name</b>	<b>NRCS Code</b>	<b>CZM Code</b>	<b>HSA Code</b>
3030	Kaneohe	20060000210000	20060000:2-10	3-2-10
3031	Kawa	20060000211000	20060000:2-11	3-2-11
3032	Puu Hawaiiiloa	20060000212000	20060000:2-12	
3033	Kawainui	20060000213000	20060000:2-13	3-2-13
3034	Kaelepulu	20060000214000	20060000:2-14	3-2-14
3035	Waimanalo	20060000215000	20060000:2-15	3-2-15
3036	Kahawai	20060000216000	20060000:2-16	
3037	Makapuu	20060000298000	20060000:2-98	
3038	Koko Crater	20060000399000	20060000:3-99	
3039	Hanauma	20060000398000	20060000:3-98	
3040	Portlock	20060000397000	20060000:3-97	
3041	Kamiloiki	20060000301000	20060000:3-01	
3042	Kamilonui	20060000302000	20060000:3-02	
3043	Hahaione			
3044	Kuliouou	20060000303000	20060000:3-03	3-3-03
3045	Niu	20060000304000	20060000:3-04	3-3-04
3046	Wailupe	20060000305000	20060000:3-05	3-3-05
3047	Waialaenui	20060000306000	20060000:3-06	3-3-06
3048	Diamond Head	20060000396000	20060000:3-96	
3049	Ala Wai	20060000307000	20060000:3-07	3-3-07s
3050	Nuuanu	20060000309000	20060000:3-09	3-3-09
3051	Kapalama	20060000310000	20060000:3-10	3-3-10
3052	Kalihi	20060000311000	20060000:3-11	3-3-11
3053	Moanalua	20060000312000	20060000:3-12	3-3-12
3054	Keehi	20060000313000	20060000:3-13	
3055	Manuwai	20060000314000	20060000:3-14	
3056	Salt Lake	20060000395000	20060000:3-95	
3057	Halawa	20060000402000	20060000:4-02	3-4-02
3058	Aiea	20060000403000	20060000:4-03	3-4-03
3059	Kalauao	20060000404000	20060000:4-04	3-4-04
3060	Waimalu	20060000405000	20060000:4-05	3-4-05
3061	Waiawa	20060000406000	20060000:4-06	3-4-06
3062	Waipio	20060000408000	20060000:4-08	
3063	Kapakahi	20060000409000	20060000:4-09	
3064	Waikele	20060000410000	20060000:4-10	3-4-10
3065	Honouliuli	20060000411000	20060000:4-11	3-4-11
3066	Kaloii	20060000499000	20060000:4-99	
3067	Makaiwa	20060000412000	20060000:4-12	
3068	Nanakuli	20060000501000	20060000:5-01	3-5-01



<b>Hydrologic Unit Code</b>	<b>Hydrologic Unit Name</b>	<b>NRCS Code</b>	<b>CZM Code</b>	<b>HSA Code</b>
3069	Ulehawa	20060000502000	20060000:5-02	3-5-02
3070	Mailiili	20060000504000	20060000:5-04	3-5-04
3071	Kaupuni	20060000505000	20060000:5-05	3-5-05
3072	Kamaileunu	20060000506000	20060000:5-06	
3073	Makaha	20060000507000	20060000:5-07	3-5-07
3074	Keaau	20060000599000	20060000:5-99	
3075	Makua	20060000508000	20060000:5-08	3-5-08
3076	Kaluakauila	20060000598000	20060000:5-98	
3077	Manini	20060000699000	20060000:6-99	
3078	Kawaihapai	20060000601000	20060000:6-01	
3079	Pahole	20060000602000	20060000:6-02	3-6-03
3080	Makaleha	20060000604000	20060000:6-04	3-6-04
3081	Waialua	20060000605000	20060000:6-05	
3082	Kiikii	20060000606000	20060000:6-06	3-6-06s
3083	Paukauila	20060000607000	20060000:6-07	3-6-07s
3084	Anahulu	20060000608000	20060000:6-08	3-6-08s
3085	Loko Ea	20060000609000	20060000:6-09	3-6-09
3086	Keamanea	20060000698000	20060000:6-98	
3087	Waimea	20060000610000	20060000:6-10	3-6-10
4001	Waihanau	20050000101000	20050000:1-01	4-1-01
4002	Waialeia	20050000102000	20050000:1-02	4-1-02
4003	Waikolu	20050000103000	20050000:1-03	4-1-03
4004	Wainene	20050000104000	20050000:1-04	4-1-04
4005	Anapuhi	20050000105000	20050000:1-05	4-1-05
4006	Waihookalo	20050000106000	20050000:1-06	4-1-06
4007	Keawanui	20050000107000	20050000:1-07	4-1-07
4008	Kailiili	20050000108000	20050000:1-08	4-1-08
4009	Pelekunu	20050000109000	20050000:1-09	4-1-09
4010	Waipu	20050000110000	20050000:1-10	4-1-10
4011	Haloku	20050000111000	20050000:1-11	4-1-11
4012	Oloupena	20050000112000	20050000:1-12	4-1-12
4013	Puukaoku	20050000113000	20050000:1-13	4-1-13
4014	Wailele	20050000114000	20050000:1-14	4-1-14
4015	Wailau	20050000115000	20050000:1-15	4-1-15
4016	Kalaemilo	20050000116000	20050000:1-16	
4017	Waihookalo	20050000117000	20050000:1-17	4-1-17
4018	Kahiwa	20050000118000	20050000:1-18	4-1-18
4019	Kawainui	20050000119000	20050000:1-19	4-1-19
4020	Piipiwai	20050000120000	20050000:1-20	4-1-20

<b>Hydrologic Unit Code</b>	<b>Hydrologic Unit Name</b>	<b>NRCS Code</b>	<b>CZM Code</b>	<b>HSA Code</b>
4021	Halawa	20050000121000	20050000:1-21	4-1-21
4022	Papio	20050000216000	20050000:2-16	4-2-16
4023	Honowewe	20050000299000	20050000:2-99	
4024	Pohakupili	20050000201000	20050000:2-01	4-2-01
4025	Honoulimaloo	20050000202000	20050000:2-02	4-2-02
4026	Honouliwai	20050000203000	20050000:2-03	4-2-03
4027	Waialua	20050000204000	20050000:2-04	4-2-04
4028	Kainalu	20050000205000	20050000:2-05	4-2-05
4029	Honomuni	20050000206000	20050000:2-06	4-2-06
4030	Ahaino	20050000207000	20050000:2-07	
4031	Mapulehu	20050000208000	20050000:2-08	4-2-08
4032	Kaluaaha	20050000209000	20050000:2-09	4-2-09
4033	Kahananui	20050000210000	20050000:2-10	4-2-10
4034	Ohia	20050000212000	20050000:2-12	4-2-12
4035	Wawaia	20050000213000	20050000:2-13	4-2-13
4036	Kamalo	20050000214000	20050000:2-14	4-2-14
4037	Kawela	20050000215000	20050000:2-15	4-2-15
4038	Kamiloloa	20050000399000	20050000:3-99	
4039	Kaunakakai	20050000301000	20050000:3-01	
4040	Kalamaulu	20050000398000	20050000:3-98	
4041	Manawainui	20050000397000	20050000:3-97	
4042	Kaluapeelua	20050000396000	20050000:3-96	
4043	Waiahewahewa	20050000395000	20050000:3-95	
4044	Kolo	20050000499000	20050000:4-99	
4045	Hakina	20050000498000	20050000:4-98	
4046	Kaunala	20050000497000	20050000:4-97	
4047	Papohaku	20050000496000	20050000:4-96	
4048	Kaa	20050000394000	20050000:3-94	
4049	Moomomi	20050000393000	20050000:3-93	
4050	Maneopapa	20050000392000	20050000:3-92	
5001	Puumaiekahi	20040000199000	20040000:1-99	
5002	Lapaiki	20040000198000	20040000:1-98	
5003	Hawaiilanui	20040000197000	20040000:1-97	
5004	Kahua	20040000196000	20040000:1-96	
5005	Kuahua	20040000195000	20040000:1-95	
5006	Poiwa	20040000194000	20040000:1-94	
5007	Halulu	20040000193000	20040000:1-93	
5008	Maunalei	20040000192000	20040000:1-92	
5009	Wahane	20040000191000	20040000:1-91	

<b>Hydrologic Unit Code</b>	<b>Hydrologic Unit Name</b>	<b>NRCS Code</b>	<b>CZM Code</b>	<b>HSA Code</b>
5010	Hauola	20040000190000	20040000:1-90	
5011	Nahoko	20040000189000	20040000:1-89	
5012	Kaa	20040000188000	20040000:1-88	
5013	Haua	20040000187000	20040000:1-87	
5014	Waiopa	20040000186000	20040000:1-86	
5015	Kahea	20040000185000	20040000:1-85	
5016	Lopa	20040000184000	20040000:1-84	
5017	Awehi	20040000183000	20040000:1-83	
5018	Kapua	20040000182000	20040000:1-82	
5019	Naha	20040000181000	20040000:1-81	
5020	Kapoho	20040000180000	20040000:1-80	
5021	Kawaiu	20040000179000	20040000:1-79	
5022	Mahanalua	20040000299000	20040000:2-99	
5023	Manele	20040000298000	20040000:2-98	
5024	Anapuka	20040000297000	20040000:2-97	
5025	Palawai Basin	20040000292000	20040000:2-92	
5026	Ulaula	20040000296000	20040000:2-96	
5027	Kaumalapau	20040000295000	20040000:2-95	
5028	Kalamanui	20040000294000	20040000:2-94	
5029	Kalamaiki	20040000293000	20040000:2-93	
5030	Paliमानो	20040000291000	20040000:2-91	
5031	Honopu	20040000290000	20040000:2-90	
5032	Kaapahu	20040000289000	20040000:2-89	
6001	Waikapu	20020000210000	20020000:2-10	6-2-10
6002	Pohakea	20020000211000	20020000:2-11	
6003	Papalua	20020000199000	20020000:1-99	
6004	Ukumehame	20020000101000	20020000:1-01	6-1-01
6005	Olowalu	20020000102000	20020000:1-02	6-1-02
6006	Launiupoko	20020000103000	20020000:1-03	6-1-03
6007	Kauaula	20020000104000	20020000:1-04	6-1-04
6008	Kahoma	20020000105000	20020000:1-05	6-1-05
6009	Wahikuli	20020000106000	20020000:1-06	6-1-06
6010	Honokowai	20020000107000	20020000:1-07	6-1-07
6011	Kahana	20020000108000	20020000:1-08	6-1-08
6012	Honokahua	20020000109000	20020000:1-09	6-1-09
6013	Honolua	20020000110000	20020000:1-10	6-1-10
6014	Honokohau	20020000111000	20020000:1-11	6-1-11
6015	Anakaluahine	20020000198000	20020000:1-98	
6016	Poelua	20020000201000	20020000:2-01	6-2-01

<b>Hydrologic Unit Code</b>	<b>Hydrologic Unit Name</b>	<b>NRCS Code</b>	<b>CZM Code</b>	<b>HSA Code</b>
6017	Honanana	20020000202000	20020000:2-02	6-2-02
6018	Kahakuloa	20020000203000	20020000:2-03	6-2-03
6019	Waipili	20020000204000	20020000:2-04	
6020	Waiolai	20020000205000	20020000:2-05	6-2-05
6021	Makamakaole	20020000206000	20020000:2-06	6-2-06
6022	Waihee	20020000207000	20020000:2-07	6-2-07
6023	Waiehu	20020000208000	20020000:2-08	6-2-08
6024	Iao	20020000209000	20020000:2-09	6-2-09
6025	Kaliainui	20020000394000	20020000:3-94	
6026	Kailua Gulch	20020000393000	20020000:3-93	
6027	Maliko	20020000301000	20020000:3-01	6-3-01
6028	Kuiaha	20020000302000	20020000:3-02	6-3-02
6029	Kaupakulua	20020000303000	20020000:3-03	6-3-03
6030	Manawaiiao	20020000304000	20020000:3-04	6-3-04
6031	Uaoa	20020000305000	20020000:3-05	6-3-05
6032	Kealii	20020000306000	20020000:3-06	
6033	Kakipi	20020000307000	20020000:3-07	6-3-07
6034	Honopou	20020000308000	20020000:3-08	6-3-08
6035	Hoolawa	20020000309000	20020000:3-09	6-3-09
6036	Waipio	20020000310000	20020000:3-10	6-3-10
6037	Hanehoi	20020000311000	20020000:3-11	6-3-11
6038	Hoalua	20020000312000	20020000:3-12	6-3-12
6039	Hanawana	20020000313000	20020000:3-13	6-3-13
6040	Kailua	20020000314000	20020000:3-14	6-3-14
6041	Nailiilihaele	20020000315000	20020000:3-15	6-3-15
6042	Puehu	20020000316000	20020000:3-16	
6043	Opuola	20020000401000	20020000:4-01	6-4-01
6044	Kaaiea	20020000402000	20020000:4-02	6-4-02
6045	Punaluu	20020000403000		
6046	Kolea	20020000404000	20020000:4-04	6-4-03
6047	Waikamoi	20020000405000	20020000:4-05	6-4-04
6048	Puohokamoa	20020000406000	20020000:4-06	6-4-06
6049	Haihuaena	20020000407000	20020000:4-07	6-4-07
6050	Punalau	20020000408000	20020000:4-08	6-4-08
6051	Honomanu	20020000409000	20020000:4-09	6-4-09
6052	Nuaailua	20020000410000	20020000:4-10	6-4-10
6053	Piinaau	20020000411000	20020000:4-11	6-4-11
6054	Ohia	20020000412000	20020000:4-12	6-4-12
6055	Waiokamilo	20020000413000	20020000:4-13	6-4-13

<b>Hydrologic Unit Code</b>	<b>Hydrologic Unit Name</b>	<b>NRCS Code</b>	<b>CZM Code</b>	<b>HSA Code</b>
6056	Wailuanui	20020000414000	20020000:4-14	6-4-14
6057	West Wailuaiki	20020000415000	20020000:4-15	6-4-15
6058	East Wailuaiki	20020000416000	20020000:4-16	6-4-16
6059	Kopiliula	20020000417000	20020000:4-17	6-4-17
6060	Waiohue	20020000418000	20020000:4-18	6-4-18
6061	Paakea	20020000419000	20020000:4-19	6-4-19
6062	Waiaaka	20020000420000	20020000:4-20	6-4-20
6063	Kapaula	20020000421000	20020000:4-21	6-4-21
6064	Hanawi	20020000422000	20020000:4-22	6-4-22
6065	Makapipi	20020000423000	20020000:4-23	6-4-23
6066	Kuhiwa	20020000424000	20020000:4-24	6-4-24
6067	Waihole	20020000425000	20020000:4-25	6-4-25
6068	Manawaikeae	20020000426000	20020000:4-26	6-4-26
6069	Kahawaihapapa	20020000427000	20020000:4-27	6-4-27
6070	Keaaiiki	20020000428000	20020000:4-28	6-4-28
6071	Waioni	20020000429000	20020000:4-29	6-4-29
6072	Kanikele	20020000430000	20020000:4-30	6-4-30
6073	Heleleikeoha	20020000431000	20020000:4-31	6-4-31
6074	Kawakoe	20020000432000	20020000:4-32	6-4-32
6075	Honomaele	20020000433000	20020000:4-33	6-4-33
6076	Kawaipapa	20020000434000	20020000:4-34	6-4-34
6077	Moomoonui	20020000501000	20020000:5-01	6-5-01
6078	Haneoo	20020000502000	20020000:5-02	6-5-02
6079	Kapia	20020000503000	20020000:5-03	6-5-03
6080	Waiohonu	20020000504000	20020000:5-04	6-5-04
6081	Papahawahawa	20020000505000	20020000:5-05	6-5-05
6082	Alaalaula	20020000506000	20020000:5-06	6-5-06
6083	Wailua	20020000507000	20020000:5-07	6-5-07
6084	Honolewa	20020000508000	20020000:5-08	6-5-08
6085	Waieli	20020000509000	20020000:5-09	6-5-09
6086	Kakiweka	20020000510000	20020000:5-10	6-5-10
6087	Hahalawe	20020000511000	20020000:5-11	6-5-11
6088	Puaaluu	20020000512000	20020000:5-12	6-5-12
6089	Oheo	20020000513000	20020000:5-13	6-5-13
6090	Kalena	20020000514000	20020000:5-14	
6091	Koukouai	20020000515000	20020000:5-15	6-5-15
6092	Opelu	20020000516000	20020000:5-16	6-5-16
6093	Kukuiula	20020000517000	20020000:5-17	6-5-17
6094	Kaapahu	20020000518000	20020000:5-18	6-5-18

<b>Hydrologic Unit Code</b>	<b>Hydrologic Unit Name</b>	<b>NRCS Code</b>	<b>CZM Code</b>	<b>HSA Code</b>
6095	Lelekea	20020000519000	20020000:5-19	6-5-19
6096	Alelele	20020000520000	20020000:5-20	6-5-20
6097	Kalepa	20020000521000	20020000:5-21	6-5-21
6098	Nuanuaaloo	20020000522000	20020000:5-22	6-5-22
6099	Manawainui	20020000524000	20020000:5-24	6-5-24
6100	Kaupo	20020000599000	20020000:5-99	
6101	Nuu	20020000598000	20020000:5-98	
6102	Pahihi	20020000597000	20020000:5-97	
6103	Waiopai	20020000596000	20020000:5-96	
6104	Poopoo	20020000595000	20020000:5-95	
6105	Manawainui	20020000594000	20020000:5-94	
6106	Kipapa	20020000593000	20020000:5-93	
6107	Kanaio	20020000592000	20020000:5-92	
6108	Ahihi Kinau	20020000399000	20020000:3-99	
6109	Mooloa	20020000398000	20020000:3-98	
6110	Wailea	20020000397000	20020000:3-97	
6111	Hapapa	20020000396000	20020000:3-96	
6112	Waiakoa	20020000395000	20020000:3-95	
7001	Lae Paki	20030000199000	20030000:1-99	
7002	Honokoa	20030000198000	20030000:1-98	
7003	Makaalae	20030000197000	20030000:1-97	
7004	Ahupuiki	20030000196000	20030000:1-96	
7005	Ahupu	20030000195000	20030000:1-95	
7006	Kaukamoku	20030000194000	20030000:1-94	
7007	Moaulaiki	20030000193000	20030000:1-93	
7008	Olohia	20030000192000	20030000:1-92	
7009	Kuheeia	20030000191000	20030000:1-91	
7010	Kaulana	20030000190000	20030000:1-90	
7011	Papakanui	20030000189000	20030000:1-89	
7012	Papakaiki	20030000188000	20030000:1-88	
7013	Waaiki	20030000187000	20030000:1-87	
7014	Kealia Luna	20030000186000	20030000:1-86	
7015	Hakioawa	20030000185000	20030000:1-85	
7016	Oawawahie	20030000184000	20030000:1-84	
7017	Pali o Kalapakea	20030000299000	20030000:2-99	
7018	Kaukamaka	20030000298000	20030000:2-98	
7019	Lae o Kaka	20030000297000	20030000:2-97	
7020	Kamohio	20030000296000	20030000:2-96	
7021	Kanaloa	20030000295000	20030000:2-95	

<b>Hydrologic Unit Code</b>	<b>Hydrologic Unit Name</b>	<b>NRCS Code</b>	<b>CZM Code</b>	<b>HSA Code</b>
7022	Waikahalulu	20030000294000	20030000:2-94	
7023	Honokanaia	20030000293000	20030000:2-93	
7024	Wai Honu	20030000292000	20030000:2-92	
8001	Kealahewa	20010000101000	20010000:1-01	
8002	Hualua	20010000102000	20010000:1-02	
8003	Kumakua	20010000103000	20010000:1-03	8-1-03
8004	Kapua	20010000104000	20010000:1-04	
8005	Ohanuala	20010000105000	20010000:1-05	
8006	Hanuala	20010000106000	20010000:1-06	8-1-06
8007	Hapahapai	20010000107000	20010000:1-07	8-1-07
8008	Pali Akamoa	20010000108000	20010000:1-08	8-1-08
8009	Wainaia	20010000109000	20010000:1-09	8-1-09
8010	Halelua	20010000110000	20010000:1-10	8-1-10
8011	Halawa	20010000111000	20010000:1-11	8-1-11
8012	Aamakao	20010000112000	20010000:1-12	8-1-12
8013	Niulii	20010000113000	20010000:1-13	8-1-13
8014	Waikama	20010000114000	20010000:1-14	8-1-14
8015	Pololu	20010000115000	20010000:1-15	8-1-15
8016	Honokane Nui	20010000116000	20010000:1-16	8-1-16
8017	Honokane Iki	20010000117000	20010000:1-17	8-1-17
8018	Kalele	20010000118000	20010000:1-18	8-1-18
8019	Waipahi	20010000119000	20010000:1-19	8-1-19
8020	Honokea	20010000120000	20010000:1-20	8-1-20
8021	Kailikaula	20010000121000	20010000:1-21	8-1-21
8022	Honopue	20010000122000	20010000:1-22	8-1-22
8023	Kolealilii	20010000123000	20010000:1-23	8-1-23
8024	Ohiahuea	20010000124000	20010000:1-24	8-1-24
8025	Nakooko	20010000125000	20010000:1-25	8-1-25
8026	Waiapuka	20010000126000	20010000:1-26	8-1-26
8027	Waikalua	20010000127000	20010000:1-27	8-1-27
8028	Waimaile	20010000128000	20010000:1-28	8-1-28
8029	Kukui	20010000129000	20010000:1-29	8-1-29
8030	Paopao	20010000130000	20010000:1-30	8-1-30
8031	Waiaalala	20010000131000	20010000:1-31	8-1-31
8032	Punalulu	20010000132000	20010000:1-32	8-1-32
8033	Kaimu	20010000133000	20010000:1-33	8-1-33
8034	Pae	20010000134000	20010000:1-34	8-1-34
8035	Waimanu	20010000135000	20010000:1-35	8-1-35
8036	Pukoa	20010000136000	20010000:1-36	8-1-36

<b>Hydrologic Unit Code</b>	<b>Hydrologic Unit Name</b>	<b>NRCS Code</b>	<b>CZM Code</b>	<b>HSA Code</b>
8037	Manuwaikaalio	20010000137000	20010000:1-37	8-1-37
8038	Naluea	20010000138000	20010000:1-38	8-1-38
8039	Kahoopuu	20010000139000	20010000:1-39	8-1-39
8040	Waipahoehoe	20010000142000	20010000:1-42	8-1-42
8041	Wailoa	20010000144000	20010000:1-44	8-1-44
8042	Kaluahine Falls	20010000146000	20010000:1-46	8-1-46
8043	Waiulili	20010000147000	20010000:1-47	8-1-47
8044	Waikoekoe	20010000148000	20010000:1-48	
8045	Waipunahoe	20010000149000	20010000:1-49	8-1-49
8046	Waialeale	20010000150000	20010000:1-50	8-1-50
8047	Waikoloa	20010000151000	20010000:1-51	8-1-51
8048	Kapulena	20010000152000	20010000:1-52	8-1-52
8049	Kawaikalia	20010000153000	20010000:1-53	8-1-53
8050	Malanahae	20010000154000	20010000:1-54	8-1-54
8051	Honokaia	20010000155000	20010000:1-55	
8052	Kawela	20010000157000	20010000:1-57	
8053	Keaakaukau	20010000158000	20010000:1-58	
8054	Kainapahoa	20010000159000	20010000:1-59	
8055	Nienie	20010000161000	20010000:1-61	8-1-61
8056	Papuaa	20010000162000	20010000:1-62	8-1-62
8057	Ouhi	20010000163000	20010000:1-63	
8058	Kahaupu	20010000165000	20010000:1-65	8-1-65
8059	Kahawaiilili	20010000166000	20010000:1-66	8-1-66
8060	Keahua	20010000167000	20010000:1-67	8-1-67
8061	Kalopa	20010000168000	20010000:1-68	8-1-68
8062	Waikaalulu	20010000169000	20010000:1-69	8-1-69
8063	Kukuilamalahii	20010000170000	20010000:1-70	8-1-70
8064	Alilipali	20010000171000	20010000:1-71	8-1-71
8065	Kaumoali	20010000173000	20010000:1-73	8-1-73
8066	Pohakuhaku	20010000175000	20010000:1-75	
8067	Waipunahina	20010000176000	20010000:1-76	8-1-76
8068	Waipunalau	20010000177000	20010000:1-77	8-1-77
8069	Paauiilo	20010000178000	20010000:1-78	8-1-78
8070	Aamanu	20010000179000	20010000:1-79	8-1-79
8071	Koholalele	20010000180000	20010000:1-80	8-1-80
8072	Kalapahapuu	20010000181000	20010000:1-81	8-1-81
8073	Kukaiiau	20010000182000	20010000:1-82	8-1-82
8074	Puumaile	20010000183000	20010000:1-83	
8075	Kekualele	20010000184000	20010000:1-84	



<b>Hydrologic Unit Code</b>	<b>Hydrologic Unit Name</b>	<b>NRCS Code</b>	<b>CZM Code</b>	<b>HSA Code</b>
8076	Kaala	20010000185000	20010000:1-85	8-1-85
8077	Kealakaha	20010000186000	20010000:1-86	8-1-86
8078	Keehia	20010000187000	20010000:1-87	
8079	Kupapaulua	20010000188000	20010000:1-88	8-1-88
8080	Kaiwiki	20010000189000	20010000:1-89	8-1-89
8081	Kaula	20010000190000	20010000:1-90	8-1-90
8082	Kaohaoha	20010000201000	20010000:2-01	8-2-01
8083	Kaawalii	20010000202000	20010000:2-02	8-2-02
8084	Waipunalei	20010000203000	20010000:2-03	8-2-03
8085	Laupahoehoe	20010000204000	20010000:2-04	8-2-04
8086	Kilau	20010000205000	20010000:2-05	8-2-05
8087	Manowaiopae	20010000206000	20010000:2-06	8-2-06
8088	Kuwaikahi	20010000207000	20010000:2-07	8-2-07
8089	Kihalani	20010000208000	20010000:2-08	8-2-08
8090	Kaiwilahilahi	20010000209000	20010000:2-09	8-2-09
8091	Haakoa	20010000210000	20010000:2-10	8-2-10
8092	Pahale	20010000211000	20010000:2-11	8-2-11
8093	Kapehu Camp	20010000212000	20010000:2-12	8-2-12
8094	Paeohe	20010000213000	20010000:2-13	8-2-13
8095	Maulua	20010000214000	20010000:2-14	8-2-14
8096	Pohakupuka	20010000216000	20010000:2-16	8-2-16
8097	Kulanakii	20010000217000	20010000:2-17	8-2-17
8098	Ahole	20010000218000	20010000:2-18	8-2-18
8099	Poupou	20010000219000	20010000:2-19	8-2-19
8100	Manoloa	20010000220000	20010000:2-20	8-2-20
8101	Ninole	20010000221000	20010000:2-21	8-2-21
8102	Kaaheiki	20010000222000	20010000:2-22	8-2-22
8103	Waikolu	20010000223000	20010000:2-23	8-2-23
8104	Waikaumalo	20010000224000	20010000:2-24	8-2-24
8105	Waiehu	20010000226000	20010000:2-26	8-2-26
8106	Nanue	20010000227000	20010000:2-27	8-2-27
8107	Opea	20010000228000	20010000:2-28	8-2-28
8108	Peleau	20010000229000	20010000:2-29	8-2-29
8109	Umauma	20010000230000	20010000:2-30	8-2-30
8110	Hakalau	20010000232000	20010000:2-32	8-2-32
8111	Kolekole	20010000233000	20010000:2-33	8-2-33
8112	Paheehee	20010000234000	20010000:2-34	8-2-34
8113	Honomu	20010000235000	20010000:2-35	8-2-35
8114	Laimi	20010000236000	20010000:2-36	8-2-36

<b>Hydrologic Unit Code</b>	<b>Hydrologic Unit Name</b>	<b>NRCS Code</b>	<b>CZM Code</b>	<b>HSA Code</b>
8115	Kapehu	20010000237000	20010000:2-37	8-2-37
8116	Makea	20010000238000	20010000:2-38	8-2-38
8117	Alia	20010000239000	20010000:2-39	8-2-39
8118	Makahalanaloa	20010000240000	20010000:2-40	8-2-40
8119	Waimaauou	20010000241000	20010000:2-41	8-2-41
8120	Waiaama	20010000242000	20010000:2-42	8-2-42
8121	Kawainui	20010000243000	20010000:2-43	8-2-43
8122	Onomea	20010000244000	20010000:2-44	8-2-44
8123	Alakahi	20010000245000	20010000:2-45	8-2-45
8124	Hanawi	20010000246000	20010000:2-46	8-2-46
8125	Kalaoa	20010000247000	20010000:2-47	8-2-47
8126	Aleamai	20010000248000	20010000:2-48	8-2-48
8127	Kaieie	20010000249000	20010000:2-49	8-2-49
8128	Puuokalepa	20010000250000	20010000:2-50	8-2-50
8129	Kaapoko	20010000251000	20010000:2-51	8-2-51
8130	Papaikou	20010000252000	20010000:2-52	8-2-52
8131	Kapue	20010000253000	20010000:2-53	8-2-53
8132	Pahoehoe	20010000254000	20010000:2-54	8-2-54
8133	Paukaa	20010000255000	20010000:2-55	8-2-55
8134	Honolii	20010000256000	20010000:2-56	8-2-56
8135	Maili	20010000257000	20010000:2-57	8-2-57
8136	Wainaku	20010000258000	20010000:2-58	
8137	Pukihae	20010000259000	20010000:2-59	8-2-59
8138	Wailuku	20010000260000	20010000:2-60	8-2-60
8139	Wailoa	20010000261000	20010000:2-61	8-2-61
8140	Kaahakini	20010000262000	20010000:2-62	8-2-62
8141	Kilauea	20010000399000	20010000:3-99	
8142	Keauhou Point	20010000389000		
8143	Kilauea Crater	20010000388000		
8144	Kapapala	20010000398000	20010000:3-98	
8145	Pahala	20010000397000	20010000:3-97	
8146	Hilea	20010000301000	20010000:3-01	
8147	Naalehu	20010000387000		
8148	Kiolakaa	20010000386000		
8149	South Point	20010000396000	20010000:3-96	
8150	Kauna	20010000499000	20010000:4-99	
8151	Kiilae	20010000401000	20010000:4-01	
8152	Kealakekua	20010000498000	20010000:4-98	
8153	Waiaha	20010000402000	20010000:4-02	8-4-02

<b>Hydrologic Unit Code</b>	<b>Hydrologic Unit Name</b>	<b>NRCS Code</b>	<b>CZM Code</b>	<b>HSA Code</b>
8154	Honokohau	20010000497000	20010000:4-97	
8155	Keahole	20010000496000	20010000:4-96	
8156	Kiholo	20010000599000	20010000:5-99	
8157	Pohakuloa	20010000598000	20010000:5-98	
8158	Kamakoa	20010000589000		
8159	Haloa	20010000501000	20010000:5-01	8-5-01
8160	Lamimaumau	20010000502000	20010000:5-02	8-5-02
8161	Waikoloa	20010000503000	20010000:5-03	8-5-03
8162	Kawaihae	20010000597000	20010000:5-97	
8163	Honokoa	20010000588000		
8164	Keawanui	20010000596000	20010000:5-96	
8165	Lapakahi	20010000595000	20010000:5-95	
8166	Mahukona	20010000594000	20010000:5-94	

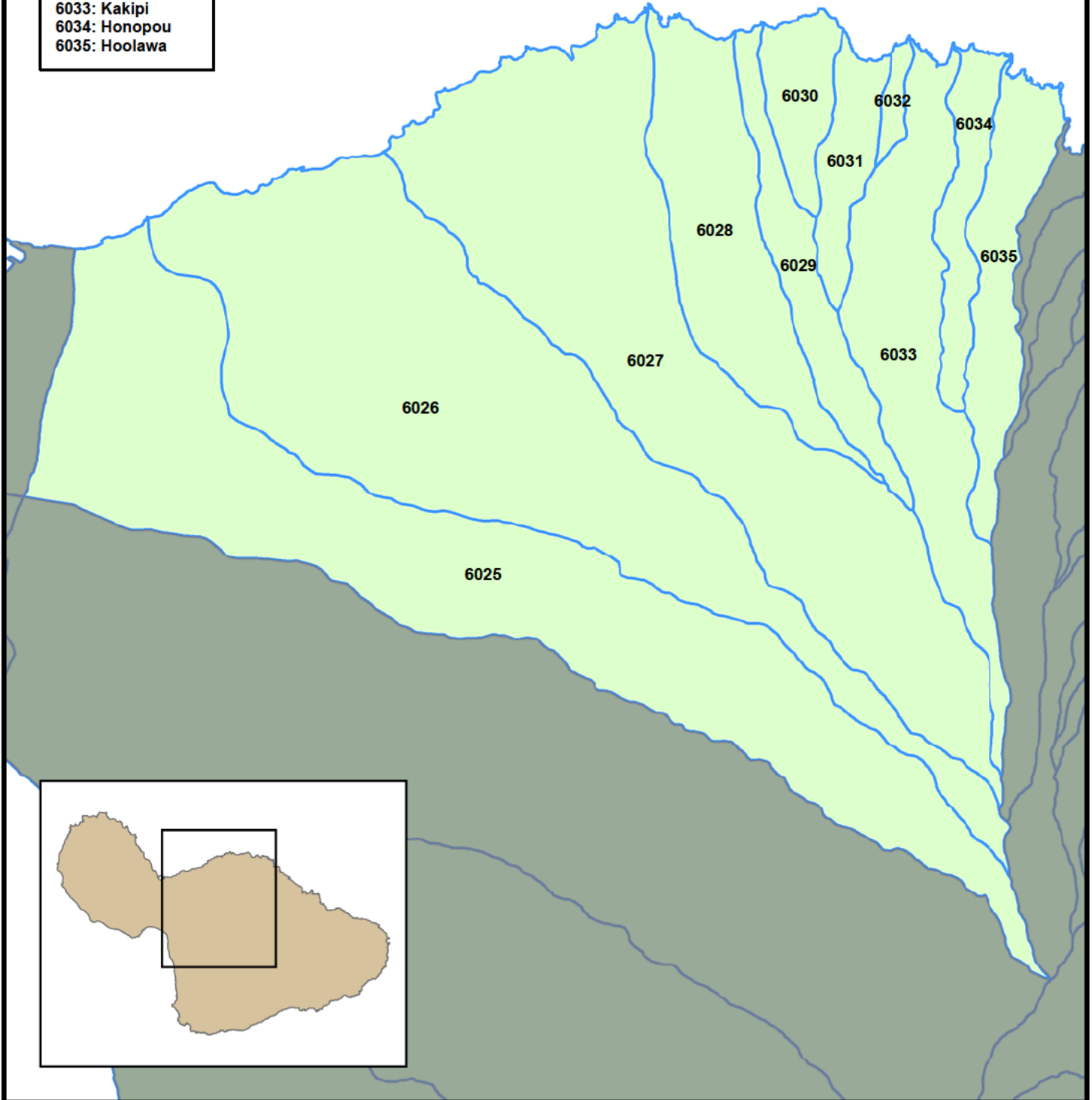


## **APPENDIX D**

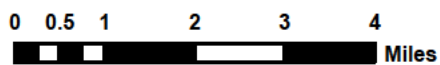
# **Surface-Water Hydrologic Unit Maps**

---

- 6025: Kaliainui
- 6026: Kailua Gulch
- 6027: Maliko
- 6028: Kuiaha
- 6029: Kaupakulua
- 6030: Manawaiiao
- 6031: Uaoa
- 6032: Kealii
- 6033: Kakipi
- 6034: Honopou
- 6035: Hoolawa

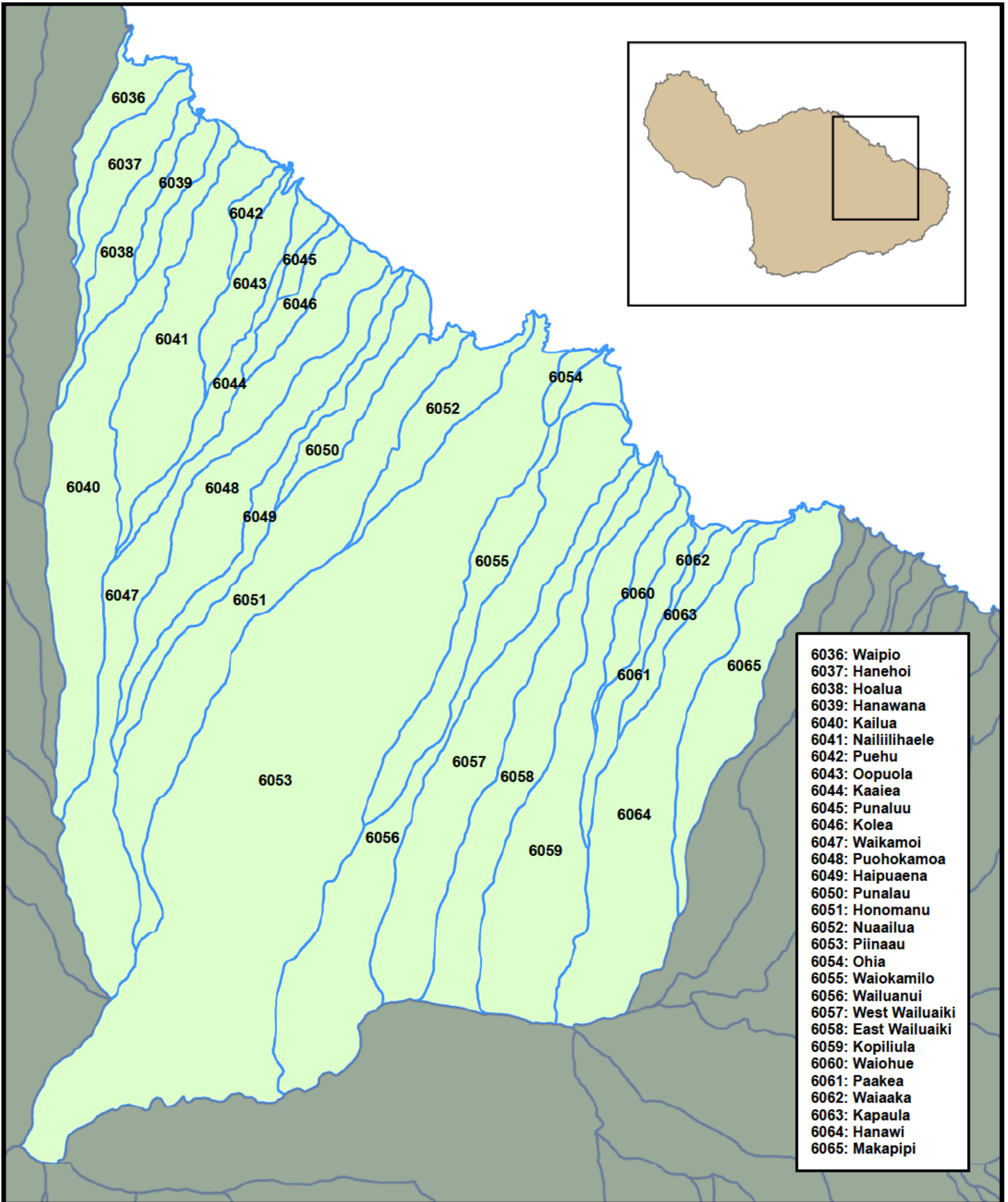


**Commission on Water Resource Management**  
**Surface-Water Hydrologic Units**

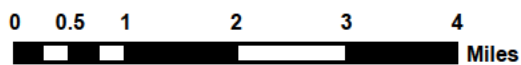


**ISLAND OF MAUI**  
**Hydrologic Unit Codes**  
**6025 to 6035**

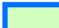
Watershed Boundaries

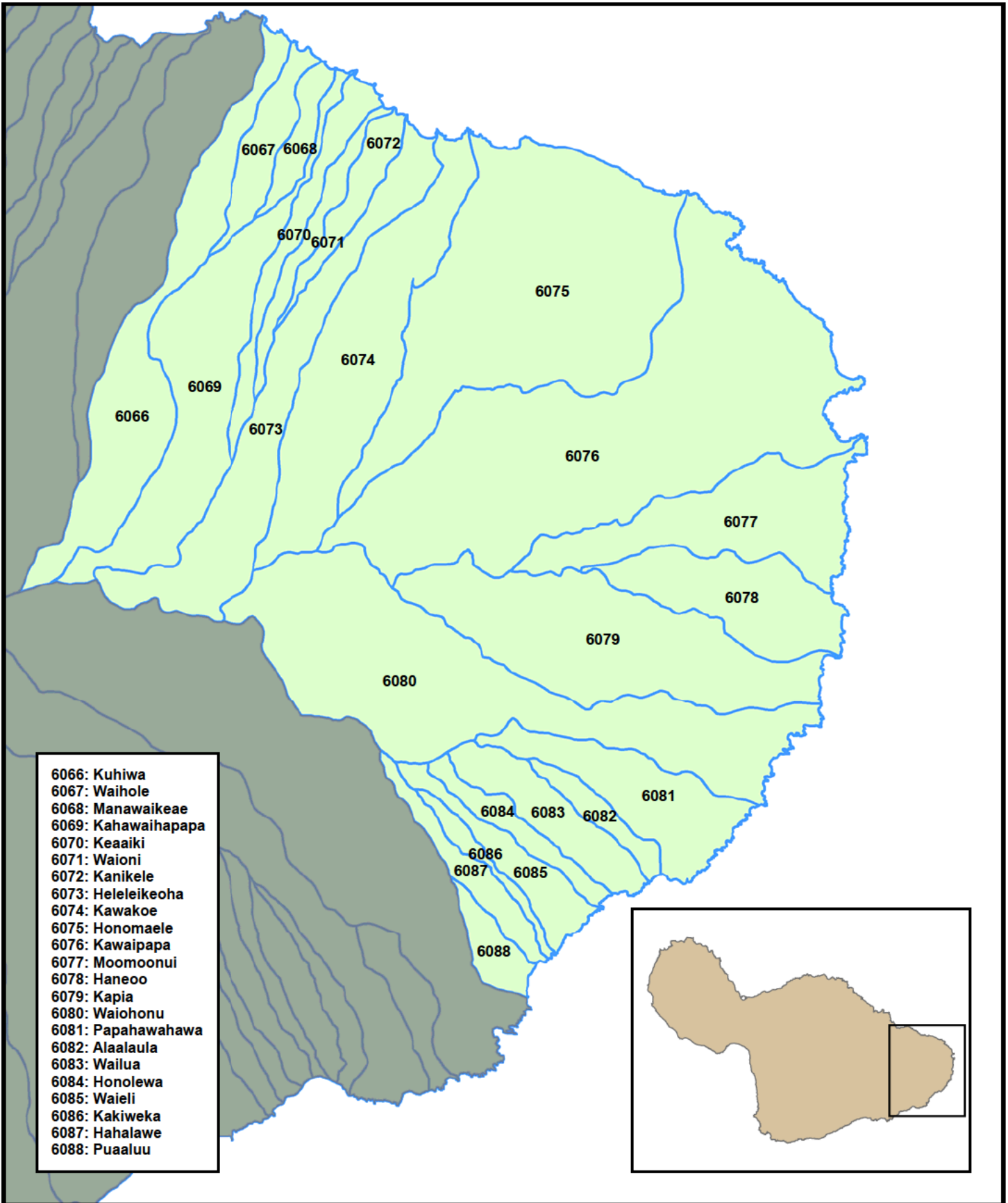


**Commission on Water Resource Management**  
**Surface-Water Hydrologic Units**

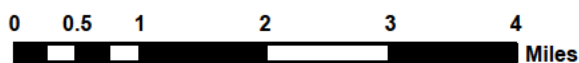


**ISLAND OF MAUI**  
**Hydrologic Unit Codes**  
**6036 to 6065**


 Watershed Boundaries



**Commission on Water Resource Management**  
**Surface-Water Hydrologic Units**



**ISLAND OF MAUI**  
**Hydrologic Unit Codes**  
**6066 to 6088**

 Watershed Boundaries